

Why choose HPC Key Machines?

QUALITY CONSTRUCTION

PRECISION ACCURACY

SUPERIOR PERFORMANCE

TIME TESTED

HIGHLY PROFITABLE

WORLD RENOWNED

USA FACTORY SUPPORT

KEY MACHINES

Code Machines.....	4
Duplicators.....	14
High Security Automotive Duplicators.....	18
Tubular Key Machines	20
Code Cards.....	22
Parts & Accessories	26
Cutters	31



Advanced Touch Screen Code Cutting

Tiger SHARK™



Extensive Internal Key Blank Cross-Reference

Easy-to-Use Touch Screen

Complete Internal Code Database

Decodes Cut Keys Flawlessly

Effortless Electronic Adjustments

Mirrored Fascia for Fast Key Insertion

Quick and Easy Update Process

Fully-Automated Computerized Machine

Accurate to .0005" (.013mm)

Specially Designed 4-Way Jaws

Cuts High-Security Angle Cuts Automatically

High-Performance Motor

2 Year Warranty

This machine can cut Automotive, Commercial, Residential, High-Security, Flat Steel, Tibbe and Tubular Keys. Optional accessories may be necessary.

Find out more about the Tiger SHARK™ at www.hpcworld.com

KEY MACHINES

The **Tiger SHARK™** features a new user-friendly design utilizing the time-tested components and engineering you have come to expect from the industry leader.

The on-board computer contains the complete code database of automotive, padlock and furniture keys. In addition there is an extensive database of lock manufacturers' depth and space specifications for commercial and residential direct digit keys. The database also includes a **comprehensive key blank cross-reference.** All of this data is easily accessed through the **intuitive touch screen**, and eliminates the need for an ancillary computer. The

The intuitive touch screen makes the Tiger SHARK™ simple to use from the first time you use it.



machine is updated annually to keep the data current. The design and construction of the machine makes cutting keys effortless. The **4-Way Jaws include the standard A and B sides, plus a top and bottom V jaw for holding**

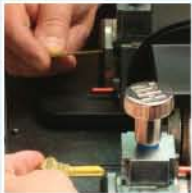


The cutter pivots automatically to make high-security angle cuts on Medeco keys.

double-sided automotive keys. The wide-open carriage area, mirrored fascia and ergonomic Easy Grip Wing Nut make loading keys fast and easy. There are 5 different cutting options available, from the standard Plunge Cut for commercial and residential keys to the Smooth Cut for automotive keys, the Tiger SHARK™

cuts keys to work in a wide variety of applications. The Main Screen lists 3 Presets for the keys you cut most frequently, making it **faster and easier to cut the popular keys.** The Decode Feature will read the depths of a cut key and translate the data to the lock manufacturer's biting; allowing a new original key to be cut. The Tiger SHARK™ can also be connected to your PC to **download bittings from MasterKing® master keying software and**

Unique reflective fascia makes key insertion fast, accurate and easy!



KeyTrail® key management software. The Tiger SHARK™ is built to exacting standards to ensure many years of reliable service for independent and institutional locksmiths, in fixed locations and in mobile lock shops.



The 4-way jaws include the standard A and B jaws as well as Top and Bottom V jaws for holding double-sided automotive keys. Specialty jaws are also available for Best and Medeco® keys.

Cut the high-profit Tubular and Tibbe keys with the optional adapters.



cut keys to work in a wide variety of applications. The Main Screen lists 3 Presets for the keys you cut most frequently, making it **faster and easier to cut the popular keys.** The Decode Feature will read the depths of a cut key and translate the data to the lock manufacturer's biting; allowing a new original key to be cut. The Tiger SHARK™ can also be connected to your PC to **download bittings from MasterKing® master keying software and**



Test Drive the Tiger SHARK™ online at www.hpcworld.com/km/tigershark



Scan for more info!



KEY MACHINES

Free Gift with Registration!

Receive a free gift by registering your new Tiger SHARK™. Your choice of one of the following:



MasterKing® or

KeyTrail®

or

Pocket Sized Decoder Kit



Your free gift will be sent directly to you upon HPC's receipt of your registration card. Free gift choices may change; check HPC's website for the most up-to-date information.

CUTTERS SUPPLIED:	
No. CW-14MC	Tool Steel 100° large cylinder
No. CW-1011	Tool Steel 90° small cylinder
No. CW-90MC	Tool Steel 90° large cylinder
No. CW-20FM	Tool Steel 76° Sargent
No. CW-47MC	Tool Steel 87° some automotive
No. CW-1012	Tool Steel 86° Medeco®

Tiger SHARK™ No. 123TSHARK

120VAC 60hz, (1/3 hp. 4.2 amps)

No. 123TSHARK240V

240VAC 50hz, (1/3 hp. 1.8 amps)

Shipping Weight: 81 lbs (37 kg)

Machine Size:

13"W x 16"D x 21"H (33W x 41D x 53H cm)

Bench Size:

21"W x 16"D (53W x 41D cm)





Powerful Computerized Code Cutting

CodeMax®



1 Year
Warranty

High-Performance
Motor

950+ Internal
Depth & Space
Data Charts

Easy-to-Use
LCD Screen

Pivoting Cutter
for High-Security
Angle Keys

Download
Bittings from
CodeSource®,
KeyTrail®
and
MasterKing®

Double-Sided
Jaws

Cuts Virtually
All Standard
Vehicle,
Commercial,
Residential and
Furniture Keys

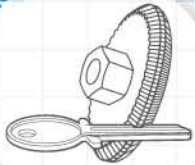
Pushbutton
Electronic
Adjustment

Fully-Automatic
Computerized
Machine

Electronic
Updating

Emergency
Stop
Button

CUTS HIGH-SECURITY ANGLE KEYS!



This machine can cut Automotive, Commercial, Residential, High-Security and Flat Steel. Optional accessories may be necessary.

Find out more about CodeMax®
at www.hpcworld.com

CodeMax® AA No. 1200MAXAA

Auto Angler Model

120VAC 60hz
1/3 hp 4.2 amps

Shipping Weight:
49 lbs (22kg)

Machine Size:
12"W x 14"D x 14"H
(30W x 36D x 36H cm)

Bench Size:
20"W x 14"D
(51W x 36D cm)

No. 1200MAXAA240V

Auto Angler Model

240VAC 50hz
1/3 hp 1.8 amps

Shipping Weight:
49 lbs (22kg)

Machine Size:
12"W x 14"D x 14"H
(30W x 36D x 36H cm)

Bench Size:
20"W x 14"D
(51W x 36D cm)

CodeMax® No. 1200MAX

Standard Model

120VAC 60hz
1/3 hp 4.2 amps

Shipping Weight:
46 lbs (21kg)

Machine Size:
12"W x 14"D x 14"H
(30W x 36D x 36H cm)

Bench Size:
20"W x 14"D
(51W x 36D cm)

No. 1200MAX240V

Standard Model

240VAC 50hz
1/3 hp 1.8 amps

Shipping Weight:
46 lbs (21kg)

Machine Size:
12"W x 14"D x 14"H
(30W x 36D x 36H cm)

Bench Size:
20"W x 14"D
(51W x 36D cm)

KEY MACHINES

Put the power of a computer in your code cutting with the CodeMax[®] Machine. Based on the industry standard Blitz[™] Machine, the CodeMax[®], introduced more than 25 years ago, **is the original computerized code machine**. The CodeMax[®] has an internal computer chip that contains **Depth & Space Data (DSD) for more than 950 different**



lock types, plus a micrometer function in both inch and metric formats. This allows it to cut virtually all standard vehicle, commercial, residential and furniture keys throughout the world. All models of the CodeMax[®] are equipped with a shoulder gauge safety switch. This feature ensures the shoulder gauge is out of the way before you start cutting a key.



On the Automatic Angler model (No. 1200MAXAA), the cutter pivots automatically to cut high security angle keys, such as Medeco[®]. Simply enter the depth and direction of the angle and the CodeMax[®] AA does the rest.

The total power of the CodeMax[®] is realized when you connect it to your PC. All machines come with a 25-foot (7.5m) 9-pin serial cable for easy connection to your computer. With HPC Software, the CodeMax[®] Machine becomes **an integral part of your computer system**.

Some of the benefits you will realize are:

- **With CodeSource[®] code retrieval software, creating an original key is as simple as looking up the code on your computer and downloading it to your CodeMax[®].**
- **Downloading master key systems from MasterKing[®], insuring error-free key cutting.**
- **The ability to interrupt that master key job to cut another code key, and easily return to the master key system.**
- **Automatically keep track of new keys created when using KeyTrail[®] key management software. Please refer to the Software Section for complete information on all of our programs.**

CUTTERS SUPPLIED:	
No. CW-14MC	Tool Steel 100° large cylinder
No. CW-1011	Tool Steel 90° small cylinder
No. CW-90MC	Tool Steel 90° large cylinder
No. CW-20FM	Tool Steel 76° Sargent
No. CW-47MC	Tool Steel 87° some automotive

With optional equipment CodeMax[®] can cut:

- Assa V10/Twin[®]
- Emhart[®] Interlocking Pin
- Medeco[®] Biaxial[®], Commercial[®], KeyMark[®] and M³ Freedom
- Schlage Primus[®]
- Flat Steel Safe Deposit Keys and others



CodeMax[®] is a sound investment in your business and it will quickly become a vital part of your lock shop.

Optional Jaws available for CodeMax[®]



Free Gift with Registration!

Receive a free gift by registering your new CodeMax[®]. Your choice of one of the following:

CodeSource[®] Lite or KeyTrail[®]

or

Pocket Sized Decoder Kit

Your free gift will be sent directly to you upon HPC's receipt of your registration card. Free gift choices may change; check HPC's website for the most up-to-date information.

KEY MACHINES



The "Standard of the Industry"

The Original **BLITZ**™



Revolutionary Code Card System

High-Performance Motor

Pinpoint Needle Accuracy

Softie™ De-Burring Brush

Electronic Safety Gauge Switch

Code Cuts High-Security Angle Keys

Double-Sided Jaws

"Standard of the Industry"

KEY MACHINES

8.30	2	.40	14.18
7.90	3	.562	14.25
7.50	4	.718	18.25
7.15	5	.874	22.20
6.75	6	1.030	26.15
6.35	7	1.186	30.10
6.00	8		
5.60	9		
5.25	10		
	11		
	12		



This machine can cut Automotive, Commercial, Residential, High-Security, Flat Steel, Tibbe and Tubular Keys. Optional accessories may be necessary.

Find out more about the Blitz™ at www.hpcworld.com

Add the Automotive Super Jaw Set (No. ASJ-1200) to easily code-cut both sides of double-sided automotive keys.

Original Blitz™
No. 1200CMB

120VAC 60hz
1/3 hp 4.2 amps
Shipping Weight: 35 lbs (16 kg)
Machine Size:
12"W x 14"D x 9"H
(30W x 36D x 23H cm)
Bench Size:
20"W x 14"D
(51W x 36D cm)

No. 1200CMB240V

240VAC 50hz
1/3 hp 1.8 amps
Shipping Weight: 35 lbs (16 kg)
Machine Size:
12"W x 14"D x 9"H
(30W x 36D x 23H cm)
Bench Size:
30"W x 14"D
(51W x 36D cm)

No. 1200CMBACDC

120VAC / 12VDC 60hz
1/7 hp 12.2 amps DC
Shipping Weight: 45 lbs (20 kg)
Machine Size:
12"W x 14"D x 11"H
(30W x 36D x 28H cm)
Bench Size:
20"W x 14"D
(51W x 36D cm)



Scan for more info!



Original Blitz™

HPC's Blitz™ is the unequivocal **“Standard of the Industry”** and has been since its inception in 1978 when it was originally introduced as the 1200CM. It revolutionized cutting keys with its innovative code card system. **By now tens of thousands of these machines have been sold around the world!**

The Blitz™ machine can cut virtually all standard pin and disc tumbler keys, as well as many specialty keys. The Blitz™ machine is **simple to use and very versatile**. In less than 30 seconds you can change from cutting a Ford 8-cut key to cutting a Medeco® Biaxial key. With optional adapters, this versatile machine will also cut 6-space and 8-space Tibbe keys found on some Ford and Jaguar vehicles, as well as 7-pin tubular keys.

To use the machine, simply insert the appropriate code card. **Use the “space” dial to move the carriage to the first space. Then move the “depth” dial to the proper depth for your first cut.** Continue this procedure until all the cuts are complete.

The Blitz™ is considered a **“must-have”** for any locksmith creating master key systems or doing code work.

Free Gift with the Original Blitz™

Receive a free gift by registering your new Original Blitz®. Your choice of one of the following:

Calibration Kit or Medeco® Cutter or CodeSource® Lite



Your free gift will be sent directly to you upon HPC's receipt of your registration card. Free gift choices may change; check HPC's website for the most up-to-date information.

The Original Blitz™ comes equipped with a deck of 150 code cards and two cutters.

CUTTERS SUPPLIED:

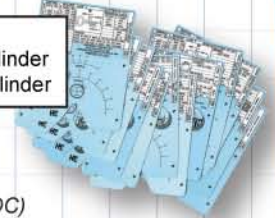
No. CW-14MC Tool Steel 100° large cylinder
No. CW-1011 Tool Steel 90° small cylinder

Original Blitz™

No. 1200CMB

No. 1200CMBACDC (120VAC/12VDC)

No. 1200CMB240V (240VAC)



Extreme Blitz™

The **Extreme Blitz™** is ideal for a new locksmith, a second shop or a new van. **Perfect for the locksmith who wants it all!** It comes with **3 cutters**, an expanded deck of **175 code cards**, the **Tubular Key Adapter Kit** (No. TKA-CMB) and the **Blitz™ Calibration Kit** (No. CMB-CK). Plus, get **FREE software** when you register your Extreme Blitz™.

CUTTERS SUPPLIED:

No. CW-14MC Tool Steel 100° large cylinder
No. CW-1011 Tool Steel 90° small cylinder
No. CW-47MC Tool Steel 87° some automotive



Free Gifts with the Extreme Blitz™

Receive **ALL** of these **FREE GIFTS** by registering your new Extreme Blitz™.

MasterKing® and How to Create Master Key Systems and CodeSource®



Your free gift will be sent directly to you upon HPC's receipt of your registration card. Free gift choices may change; check HPC's website for the most up-to-date information.

Extreme Blitz™

No. 1200CMBX

No. 1200CMBXACDC (120VAC/12VDC)

No. 1200CMBX240V (240VAC)

Base Model Blitz™

The **Base Model Blitz™** is the perfect second machine! It comes without code cards, cutters, binder or free gift. **Use your existing code cards and cutters to make it a dedicated machine for the keys you cut most often.**

Base Model Blitz™

No. 1200B

No. 1200B240V (240VAC)



KEY MACHINES



Two World-Class Machines in One

SWITCH BLITZ™



Unique Concept
Earned U.S.
Patent No. 7,070,369

Revolutionary
Code Card System

Based on the
"Standard of the Industry"
Original Blitz™

High-Performance
Motor

Pinpoint Needle
Accuracy

Tylon-X
Softie™ Brush

Code Cut
High-Security
Angle Cuts

Semi-Automatic
Duplication

Double-Sided
Jaws

Expansive Carriage Range
to Duplicate Extra-Long
Automotive Keys

Electronic Safety
Gauge Switch

KEY MACHINES

THS	MM	#	INCH	MM	
55	8.50	1	.205	5.20	.205
23	8.20	2	.362	9.20	
09	7.70	3	.520		
83	7.20	4	.677		
64	6.70	5	.834		
44	6.20	6	.992	25	
24	5.70	7	1.150	25	
205	5.20	8			
185	4.70	9			
165	4.20	10			
		11			
		12			

DEPTH	INCREMENT	SPACING	INCREMENT
H	MM	INCH	MM
ES	VADIC	4	100



This machine can cut Automotive, Commercial, Residential, High-Security, Flat Steel, Tibbe and Tubular Keys. Optional accessories may be necessary.

Find out more about the Switch Blitz™ at www.hpcworld.com



Add the Automotive Super Jaw Set (No. ASJ-1200) to easily code-cut both sides of double-sided automotive keys.



Switch Blitz™ No. 1233CMSB

120VAC 60hz
1/3 hp 4.2 amps
Shipping Weight: 39 lbs (17 kg)
Machine Size:
12"W x 14"D x 9"H
(30W x 36D x 23H cm)
Bench Size:
20"W x 14"D
(51W x 36D cm)

No. 1233CMSB240V

240VAC 50hz
1/3 hp 1.8 amps
Shipping Weight: 39 lbs (17 kg)
Machine Size:
12"W x 14"D x 9"H
(30W x 36D x 23H cm)
Bench Size:
20"W x 14"D
(51W x 36D cm)

No. 1233CMSBACDC

120VAC / 12VDC 60hz
1/7 hp 12.2 amps DC
Shipping Weight: 49 lbs (22 kg)
Machine Size:
12"W x 14"D x 11"H
(31W x 36D x 28H cm)
Bench Size:
20"W x 14"D
(51W x 36D cm)

The HPC Switch Blitz™ design is so incredibly unique that it was awarded a U.S. Patent. Now in the bench space of 1 machine you have 2 top-quality key machines: The Blitz™ Machine and a Semi-Automatic Duplicator.

The brilliant design and engineering makes the switch from code cutting to duplicating as simple as 1, 2, 3.

1. Slide the code bearing sleeve to the right.
2. Push in the locking pin to hold the depth crank in place.
3. Flip the depth crank toggle handle down to engage the spring-loaded duplicating plunger.

No tools are needed and no adjustments are required to the machine to switch from code cutting to duplicating, and back again.

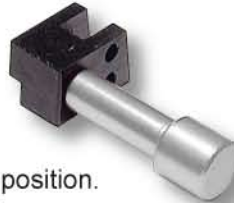
The Switch Blitz™ has an exceptionally wide distance between the 2 jaws, making it perfect for duplicating extra-long automotive keys. In fact, it is the only machine that can duplicate some of the automotive keys with integral remotes.

The Switch Blitz™ is equipped with the latest features. It comes with the **unique Quick Nut on the cutter shaft that allows for changing cutters without using any tools.**



Simply hold onto the belt with one hand and turn the Quick Nut with the other hand to loosen and tighten the nut. Hand tightening the nut is sufficient to secure the cutter on the machine. The left-hand jaw is furnished with the **Easy Flip Shoulder Gauge handle.**

This handle makes it easy to raise and lower the shoulder gauge. It also has the **safety switch on the shoulder gauge**, which prevents the machine from powering on if the shoulder gauge is not all the way in the down position.

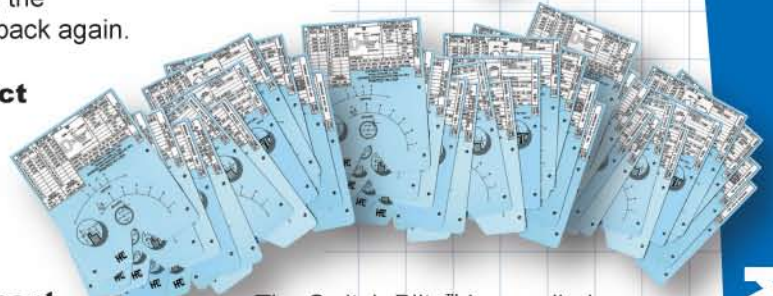


The motor on the Switch Blitz™ is a custom-designed, high performance model that provides ample torque for cutting. It is available in 120VAC or 240VAC for use in a shop, and with a combination 120VAC/12VDC motor when you want to use it in both your shop and vehicle.

The machine is **supplied with 150 code cards**, including many cards for the latest cars. Additional code cards and adapters are available separately with which various specialty keys can be cut by code, such as standard 7-pin tubular keys, 6- and 8-space Tibbe keys (used on some Ford and Jaguar cars), Medeco® keys, and safe deposit box keys. The Switch Blitz™ is truly 2 world-class key machines in 1.



If you need a machine for your van, or only have space for one machine or you are ready to buy your first key machine, the Switch Blitz™ is a great choice.



The Switch Blitz™ is supplied with 150 code cards.



CUTTERS SUPPLIED:	
No. CW-14MC	Tool Steel 100° large cylinder
No. CW-1011	Tool Steel 90° small cylinder
No. CW-6010	Tool Steel 60° duplication

- Switch Blitz™**
No. 1233CMSB
No. 1233CMSBACDC (120VAC/12VDC)
No. 1233CMSB240V (240VAC)

Free Gift with the Switch Blitz™

Receive a free gift by registering your new Switch Blitz™.

Calibration Kit



or Medeco® Cutter



or CodeSource® Lite



Your free gift will be sent directly to you upon HPC's receipt of your registration card. Free gift choices may change; check HPC's website for the most up-to-date information.



Portable Punching Power

The Punch Machine™



This machine punches Automotive, Commercial and Residential Keys.

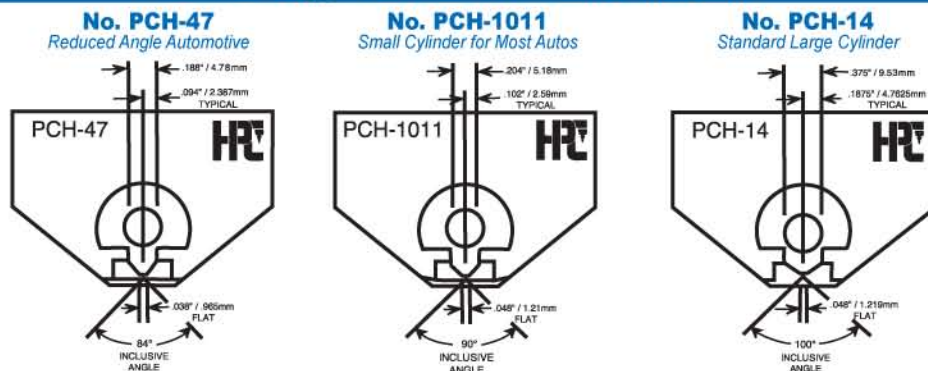
Find out more about The Punch Machine™ at www.hpcworld.com

KEY MACHINES

The Punch Machine™ No. 1200PCH

Shipping Weight: 23 lbs (10 kg)
Machine Size:
10"W x 13"D x 7"H
(25W x 33D x 18H cm)
Bench Size:
18"W x 13"D
(46W x 33D cm)

Punches supplied with The Punch Machine™



The Punch Machine™ operates on the same principle as the Blitz™ machine. However, instead of an electric motor turning a cutting wheel, The Punch Machine™ uses a manually-operated lever to "punch" keys by code. This means no electricity is needed, so that you can bring your code machine to the job site. **It is completely portable and punches accurate keys by code quickly and effortlessly.**

The Punch Machine™ is all-inclusive. It comes with 104 code cards (including 4 micrometer cards) and 3 punch and die sets, making it ready to cut most commercial, residential, automotive and furniture keys right out of the box!

The design of some keyways (for example some Schlage Primus XP) is such that the side milling causes the blank to be exceptionally thin. The rotary milling cutter on other machines bends the blank, making it unusable. **Only The Punch Machine™ by HPC, with its precision punching process can effectively cut these keys.**

The Punch Machine™ is a must for those who need a portable machine to create original keys where electricity may not be available.



The Punch Machine™ No. 1200PCH

CardWare™

Don't have that code card? Print your own! With **CardWare™** and your printer you can create a code card for any applicable key.



Free Gift with The Punch Machine™

Receive a free gift by registering your new Punch Machine™. Your choice of one of the following:

- How to Create Master Key Systems
- CodeSource® Lite
- 15" Flex-A-Light™

Your free gift will be sent directly to you upon HPC's receipt of your registration card. Free gift choices may change; check HPC's website for the most up-to-date information.

KEY MACHINES



Professional Grade Duplicators

Automate™



High Quality
Double Angle
Cutter

High-Performance
Motor

Total Cutting
Cycle Takes
Only
12 Seconds

Fully-Automated
Hands-Free
Key Cutting

Sturdy
Construction

Accurate Through
Multiple Generations

Automate™
No. 6666HQT
No. 6666HQT240V (240VAC)

*This machine cuts Automotive,
Commercial and Residential Keys*

4-Way
Jaws



The **Automate™** is a fully-automatic heavy-duty key duplicator. It is equipped with **4-way jaws to securely hold a wide variety of keys including double-sided automotive and small furniture keys.**

The high-performance motor provides ample torque and the **double-angle tool steel cutter makes for precise duplicating.** An optional carbide cutter is available for longer cutter life, particularly beneficial when cutting harder key blanks.

The **cutting cycle takes only 12 seconds,** making quick work of cutting a lot of keys. Just load the keys and press the button, the Automate™ will do the rest, leaving you free to go back to your customer or other work at hand. **Simple operation and consistent results** make the Automate™ an ideal machine even for your apprentice to use.



CUTTER SUPPLIED:

No. CW-42HQT Tool Steel 60° for duplicating

Optional Carbide Cutter:

No. CW-41HQC Carbide 60° for duplicating

Find out more about the Automate™
at www.hpcworld.com



Scan for more info!

Automate™ No. 6666HQT

120VAC 60hz
1/3 hp 4.2 amps
Shipping Weight: 35 lbs (16 kg)
Machine Size:
12"W x 16"D x 11"H
(30W x 41D x 28H cm)
Bench Size:
19"W x 16"D
(48W x 41D cm)

No. 6666HQT240V

240VAC 50hz
1/3 hp 1.8 amps
Shipping Weight: 35 lbs (16 kg)
Machine Size:
12"W x 16"D x 11"H
(30W x 41D x 28H cm)
Bench Size:
19"W x 16"D
(48W x 41D cm)



High-Performance Motor



Softie™ De-Burring Brush

Lever Action

High Quality Double Angle Cutter

Accurate Through Multiple Generations

Double-Sided Jaws

Semi-Automatic

Trace-A-Key®

No. 3344HQT

No. 3344HQT240V (240VAC)

No. 3344HQTACDC (120VAC/12VDC)

This machine cuts Automotive, Commercial and Residential Keys

The **Trace-A-Key®** is a semi-automatic duplicator designed to be the fastest, most accurate and most dependable duplicator available. It is loaded with must-have features: The spring-loaded carriage assures consistent duplication, and the **expansive range allows for the cutting of longer automotive keys**.

It is equipped with a high-performance motor for trouble-free cutting. A Softie™ Brush, made with carbide-impregnated Tylon-X bristles, is included. The **double-angle tool steel cutter makes for fast and accurate duplicating**. An optional carbide cutter is available allowing for longer cutter life, particularly when using harder key blanks.

The double-sided jaws hold a wide variety of keys. The rugged single-casting construction makes it a solid and very durable machine.

The Trace-A-Key®, a high-performance duplicator, accurate through multiple generations, makes cutting a large quantity of keys an easy task.



CUTTER SUPPLIED:
 No. CW-42HQT Tool Steel 60° for duplicating
Optional Carbide Cutter:
 No. CW-41HQC Carbide 60° for duplicating

Find out more about the Trace-A-Key® at www.hpcworld.com



Scan for more info!

Trace-A-Key®

No. 3344HQT

120VAC 60hz
 1/3 hp 4.2 amps
 Shipping Weight: 29 lbs (13 kg)
 Machine Size:
 12"W x 16"D x 13"H
 (30W x 41D x 33H cm)
 Bench Size:
 22"W x 17"D
 (56W x 43D cm)

No. 3344HQT240V

240VAC 50hz
 1/3 hp 1.8 amps
 Shipping Weight: 29 lbs (13 kg)
 Machine Size:
 12"W x 16"D x 13"H
 (30W x 41D x 33H cm)
 Bench Size:
 22"W x 17"D
 (56W x 43D cm)

No. 3344HQTACDC

120VAC / 12VDC 60hz
 1/7 hp 12.2 amps DC
 Shipping Weight: 29 lbs (13 kg)
 Machine Size:
 12"W x 16"D x 13"H
 (30W x 41D x 33H cm)
 Bench Size:
 22"W x 17"D
 (56W x 43D cm)

KEY MACHINES



Industrial Grade Duplicators

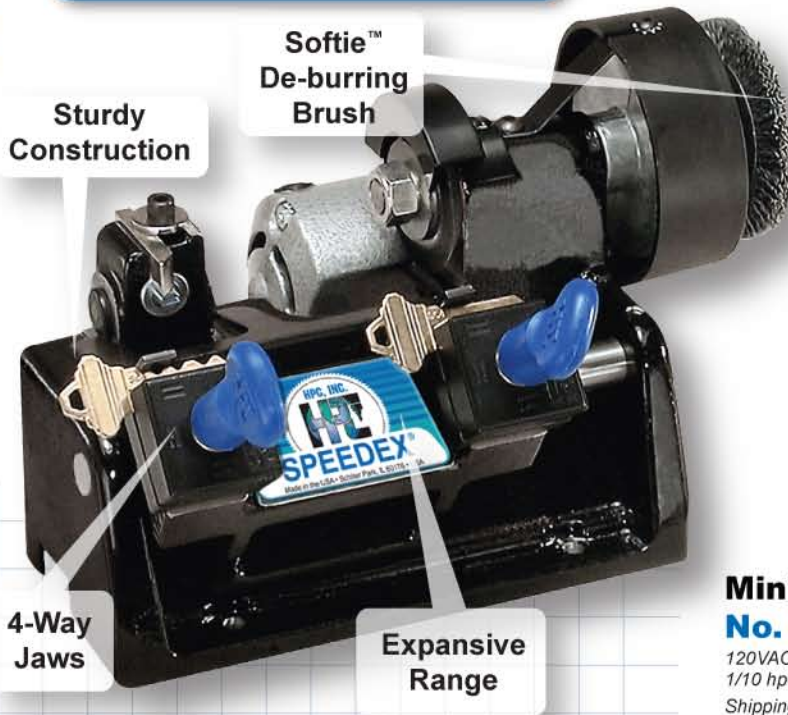


The **HPC Speedex® Series** is a full line of Industrial Grade Duplicators ideal for a locksmith shop or service vehicle. These machines all come with **4-way jaws**, which allow them to cut a wide variety of different blanks, including double-sided keys (such as automotive keys).

The expansive carriage allows HPC Speedex® Duplicators to **accommodate large-bow and longer automotive keys**. Each machine in this line comes with an HPC Softie™ de-burring brush. The **durable construction and bronze bearings** combine for a long lasting machine.



Mini Speedex®



The **Mini Speedex®** is a **lightweight key duplicator and is one of the most accurate small key machines on the market**. Its size and weight make the Mini Speedex® convenient for stationary or portable use. The Mini Speedex® comes with a standard grade W1 steel single-angle cutter especially designed for its high rpm. The Mini Speedex® is available in 120VAC, 240VAC or 12VDC and takes up very little bench space.

CUTTER SUPPLIED:
No. CW-23RM Tool Steel 45° for duplicating



Mini Speedex®

No. 9120RM	No. 9120RM240V	No. 9120RMDC
120VAC 60hz	240VAC 50hz	12VDC
1/10 hp 1.2 amps	1/10 hp 1.2 amp	1/10 hp 1 amps
Shipping Weight: 17 lbs (7 kg)	Shipping Weight: 17 lbs (7 kg)	Shipping Weight: 18 lbs (8kg)
Machine Size: 11"W x 8"D x 8"H (28W x 20D x 20H cm)	Machine Size: 11"W x 8"D x 8"H (28W x 20D x 20H cm)	Machine Size: 11"W x 8"D x 8"H (28W x 20D x 20H cm)
Bench Size: 16"W x 11"D (41W x 28D cm)	Bench Size: 16"W x 11"D (41W x 28D cm)	Bench Size: 16"W x 11"D (41W x 28D cm)

Mini Speedex®

- No. 9120RM
- No. 9120RMDC (12VDC)
- No. 9120RM240V (240VAC)

Speedex® Accessories



Double Angle Conversion Kit
No. CW-51MC
No. CW-50MC
Cutter Wheel Only

When duplicating from depth keys, using a double-angle cutter allows you to accurately plunge-cut the new key. The double-angle cutter also decreases cutting time while increasing cutter life by allowing cuts to be made in both directions (bow-to-tip and tip-to-bow) when duplicating. The Speedex® **Double-Angle Cutter Kit** comes with all necessary parts, including the cutter, corresponding tracer and 2 washers, and fits all Speedex® machines.

Speedex® Slotter Cutters

- No. CW-16KIT
- No. CW-45SMS

The Premier and Power Speedex® have reversible tracers, so that you can **cut flat steel keys with the optional slotter cutter kit (No. CW-16KIT)** or the combination standard/flat steel steel slotter cutter (No. CW-45SMS).



Premier Speedex®



Heavy-Duty Motor

Reversible Tracer for Flat Steel Keys

Sturdy Base

Includes all the Features of Mini Speedex® Plus More.

The **Premier Speedex®** is a dependable manual duplicator with a heavy-duty motor. It is simple to use and makes easy work out of duplicating even a large number of keys. The Premier Speedex® is mounted on a sturdy base for extra stability.

CUTTER SUPPLIED:
No. CW-23MC Tool Steel 45° for duplicating



Premier Speedex®
No. 9160MC
No. 9160MCDC (12VDC)
No. 9160MC240V (240VAC)

Premier Speedex®

No. 9160MC

120VAC 60hz
1/6 hp 3.6 amps
Shipping Weight:
32 lbs (15 kg)
Machine Size:
12"W x 14"D x 8"H
(30W x 36D x 20H cm)
Bench Size:
17"W x 17"D
(43W x 43D cm)

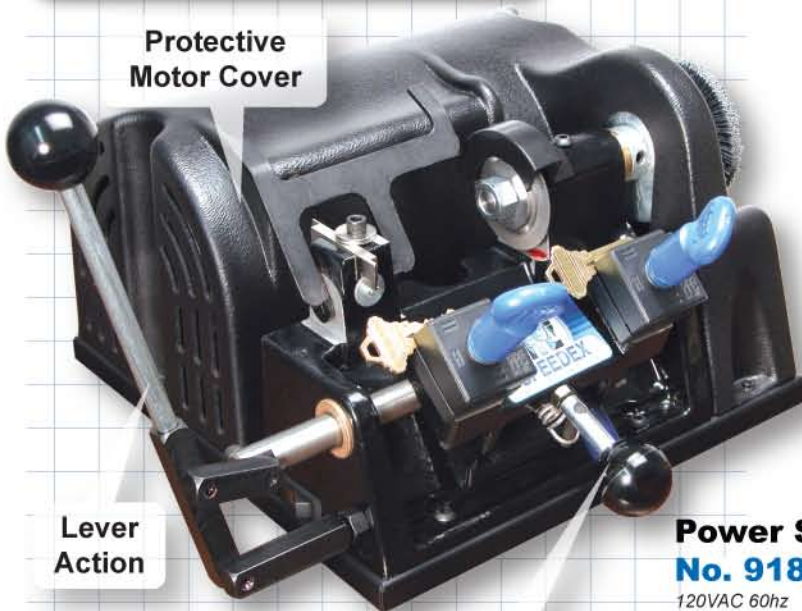
No. 9160MC240V

240VAC 50hz
1/3 hp 1.8 amps
Shipping Weight:
32 lbs (15 kg)
Machine Size:
12"W x 14"D x 8"H
(30W x 36D x 20H cm)
Bench Size:
17"W x 17"D
(43W x 43D cm)

No. 9160MCDC

12VDC
1/7 hp 12.2 amps
Shipping Weight:
27 lbs (12kg)
Machine Size:
12"W x 14"D x 8"H
(30W x 36D x 20H cm)
Bench Size:
17"W x 17"D
(43W x 43D cm)

Power Speedex®



Protective Motor Cover

Lever Action

Semi-Automatic Operation

Includes all the Features of Both the Mini Speedex® & Premier Speedex® Plus More.

The **Power Speedex®** is a semi-automatic duplicator operated by a spring-loaded carriage with a safety release. This design allows the carriage to move smoothly with the use of one hand when cutting keys. The Power Speedex® is mounted on a sturdy base and has a molded plastic cover that encloses the motor.

CUTTER SUPPLIED:
No. CW-23MC Tool Steel 45° for duplicating

Power Speedex®
No. 9180MC
No. 9180MCDC (12VDC)
No. 9180MC240V (240VAC)

Power Speedex®

No. 9180MC

120VAC 60hz
1/6 hp 3.6 amps
Shipping Weight:
35 lbs (16 kg)
Machine Size:
13"W x 16"D x 10"H
(33W x 41D x 25H cm)
Bench Size:
18"W x 19"D
(46W x 48D cm)

No. 9180MC240V

240VAC 50hz
1/3 hp 1.8 amps
Shipping Weight:
35 lbs (16 kg)
Machine Size:
13"W x 16"D x 10"H
(33W x 41D x 25H cm)
Bench Size:
18"W x 19"D
(46W x 48D cm)

No. 9180MCDC

12VDC
1/7 hp 12.2 amps
Shipping Weight:
29 lbs (13 kg)
Machine Size:
13"W x 16"D x 10"H
(33W x 41D x 25H cm)
Bench Size:
18"W x 19"D
(46W x 48D cm)

KEY MACHINES



These machines can cut Automotive, Commercial and Residential keys. The Premier Speedex® and Power Speedex® will also cut Flat Steel keys. Optional accessories may be necessary.



Automotive High Security Duplicators

Big Groove™

HPC

NEW



Scan for more info!

Swing-Away Head
for Easy Key Loading

CNC Precision
Manufactured

Heavy-Duty
Construction

Dual Handed
Control
Prevents Skewing

Fluid
XY-Platform

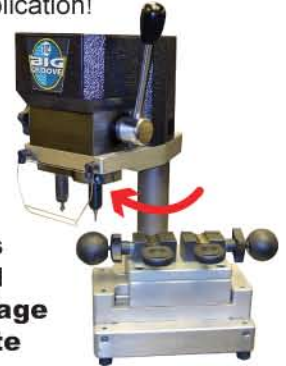
**This machine can cut High-Security
Automotive Track Keys.**

Capture your piece of the highly profitable track key market. With the premium price charged for these keys, the **affordable price** of the Big Groove™ makes it an excellent investment in your business.

The HPC **Big Groove™** is new from the ground up. It incorporates American precision CNC machining with over 55 years of HPC Key Cutting expertise!

This supremely accurate, heavy-duty track key duplicator will set a **new standard of excellence** in track key duplication!

Big Groove™ cuts the most popular 2-track and 4-track keys (internal and external) without additional adapters. Plus, it cuts many luxury and specialty keys! **Its unique swing-away head allows for easy key loading and with its easy-glide carriage it cuts perfectly accurate keys effortlessly.**



Once found only on a few luxury cars such as Mercedes and BMW, track keys (also known as laser or sidewinder keys) are now used on many models from nearly all of the auto manufacturers, including Chrysler, Ford, GM, Honda, Hyundai, Toyota and VW.

The super smooth X-Y table is operated with both hands to provide total "hands-on" control of the key cutting, and also solves the problem of single-handed skewing found on other machines.



Duplicating these keys is highly profitable. The new Big Groove™ makes it easy and affordable to get into this lucrative market.

The precision engineering and manufacturing put into this heavy-duty duplicator ensure generations of accurate keys.

Big Groove™ No. 8100BG

120VAC 60hz, 1.78 hp 1 amp
Shipping Weight: 38 lbs (17.5 kg)
Machine Size:
9"W x 11"D x 15"H
(23W x 28D x 38H cm)
Bench Size:
11"W x 17"D (28W x 42D cm)

No. 8100BG240V

240VAC 50hz, 1/10 hp 1 amp
Shipping Weight: 38 lbs (17.5 kg)
Machine Size:
9"W x 11"D x 15"H
(23W x 28D x 38H cm)
Bench Size:
11"W x 17"D (28W x 42D cm)

Mini Groove™

The HPC Mini Groove™ is a totally portable, extremely affordable high-security automotive key duplicator designed for the locksmith on the go! It can be powered in two ways, either by the rechargeable internal 12 volt DC battery or from your vehicle battery.

Its flexibility and compact size make the Mini Groove™ a completely portable key machine that can be left in the shop, mounted in your van or carried with you to the job. Once charged, the internal battery and 1800rpm motor supply enough power to cut more keys than you would need in an average day.

With the 3-flute 3/32" (2.5mm) end mill cutter and versatile jaws on the Mini Groove™, you will be able to accurately duplicate virtually all 2-track and 4-track, internal and external keys. The single-size cutter design allows you to cut narrow tracks and the fluid XY-platform allows you to widen cuts for large tracks.

The jaws are designed to elevate and securely grip virtually any standard track key. This feature gives you ample space on the blank edges for cutting external tracks without worrying about jaw or cutter damage.

The Mini Groove™ jaws also have multiple slots for tip gauging different length keys and each jaw is equipped with a Key Retaining Plate to help secure difficult to hold keys. The Mini Groove™ comes with a light to illuminate the cutting area when working in poorly lit places. Under normal use, the only adjustment that you will make is raising and lowering the cutter and tracer into position by turning the knob on top of the machine.

The Mini Groove™ is one of the easiest machines to use and cutting high-margin track keys, you will quickly re-coup your investment.



Easily Raise & Lower Cutter and Tracer

The Most Affordable Machine of its Kind

Can Operate Off of Your Car Battery

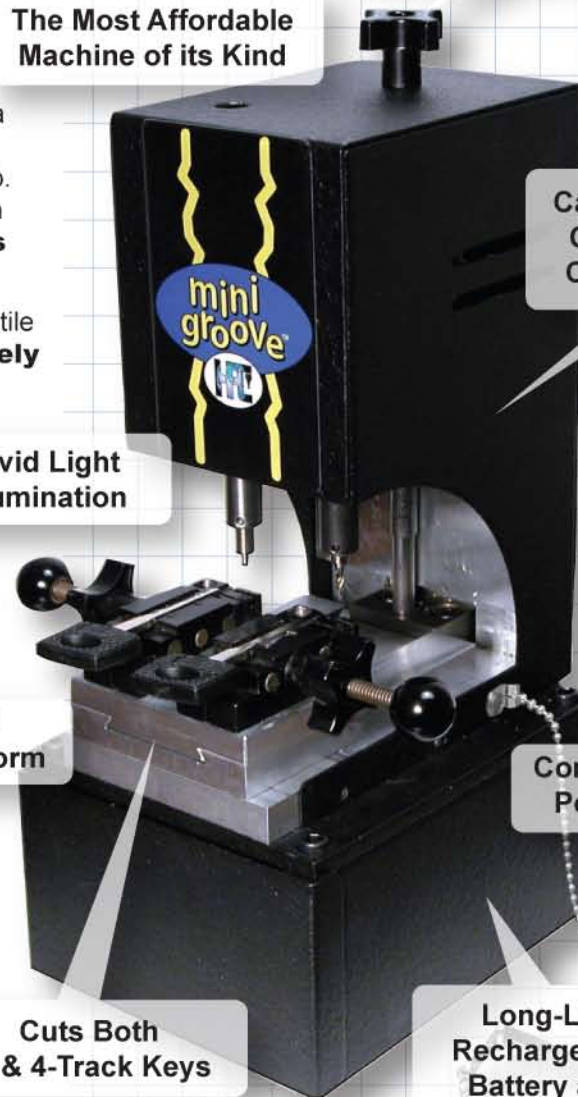
Vivid Light Illumination

Fluid XY-Platform

Completely Portable

Cuts Both 2- & 4-Track Keys

Long-Life Rechargeable Battery and AC Charger



KEY MACHINES

This machine can cut High-Security Automotive Track Keys.

Mini Groove™ No. 8000MGDC

120VDC 7.2 amps
Shipping Weight: 25 lbs (11.5 kg)
Machine Size:
7"W x 7"D x 13"H
(18W x 18D x 33H cm)
Bench Size:
18"W x 7"D
(46W x 18D cm)



No. 8000MGDC
with Charger for
North & South America
Input: 120 VAC, 60hz



No. 8000MGDCE
with Charger for Europe
Input: 240VAC, 50hz



No. 8000MGDCAU
with Charger for Australia
& New Zealand
Input: 240VAC, 50hz



No. 8000MGDCUK
with Charger United Kingdom
Input: 240VAC, 50hz

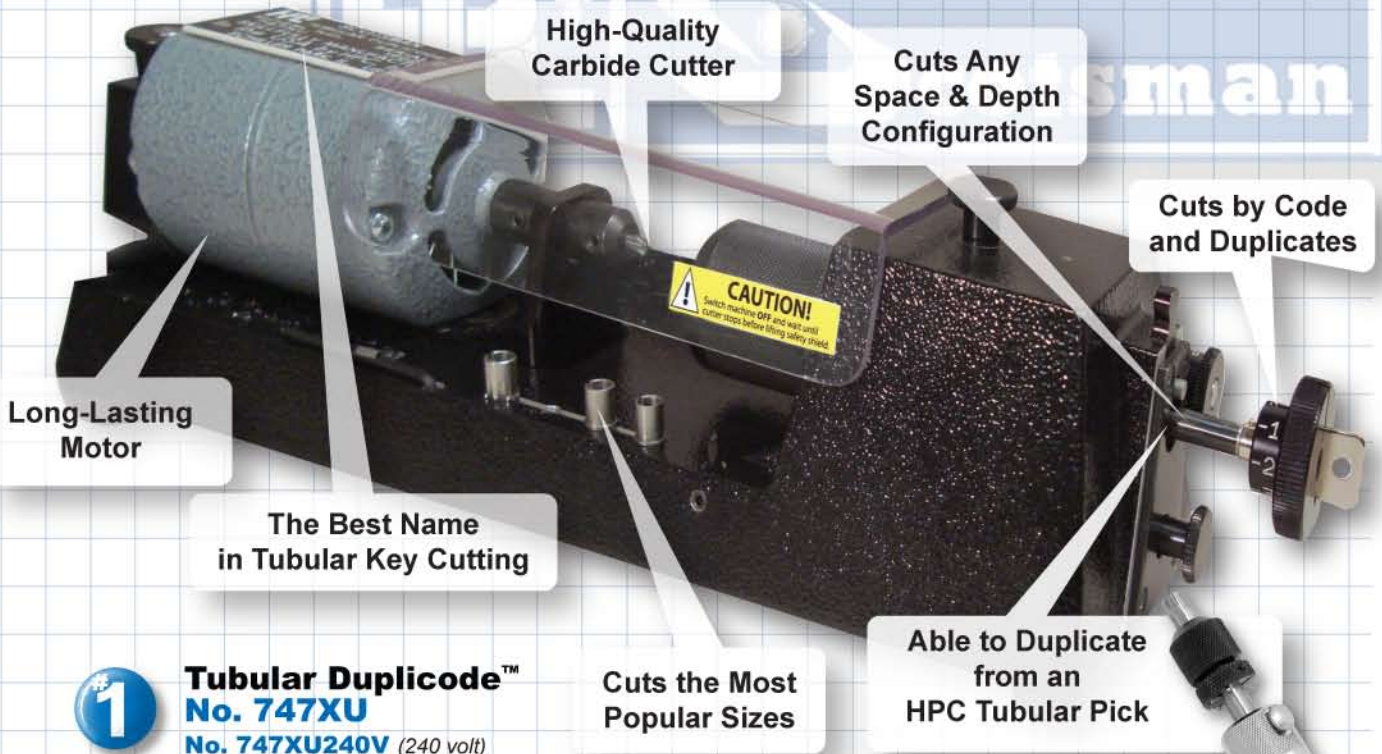


The Best Name in Tubular Key Cutting



The tubular lock was invented in 1934, and was developed specifically as a high security alternative to the common commercial lock cylinder. Today, tubular locks are found virtually everywhere, from alarm switches to vending machines, from cam locks to motorcycle ignitions. Tubular locks continue to be an essential part of the security picture as a whole. **For a locksmith to be successful in today's market they must be able to produce all types of keys for their customers, including tubular keys.**

Tubular Duplicode™



Tubular Duplicode™
No. 747XU
No. 747XU240V (240 volt)

The **HPC/Scotsman Tubular Duplicode™** is the preeminent tubular key machine. **It will cut most of the popular sizes of tubular keys by code**, including 7-pin standard, oversized and small bore. It accommodates 8-, 10-, & 11-cuts, right & left-hand cuts, dead-pin cuts and pin-within-a-pin cuts. It also can **duplicate a wide variety of keys with**

any space and depth configuration, as well as duplicate a key from an HPC Tubular Pick. The Tubular Duplicode™ is equipped with a carbide cutter for smooth cutting and a plexiglas shield for added safety. This is an **extremely versatile machine** that will handle virtually all tubular code cutting and duplicating.

This machine can cut most popular size Tubular Keys.

Code-cut Tubular Keys on your HPC Blitz™, Switch Blitz™ or Tiger SHARK™ machine with the Tubular Key Adapter.



Tubular Duplicode™

No. 747XU

115VAC 60hz
1/15 hp 1.5 amps
Shipping Weight:
11 lbs (5 kg)
Machine Size:
16"W x 5"D x 5"H
(41W x 13D x 13 cm)
Bench Size:
20"W x 6"D
(51W x 15D cm)

No. 747XU240V

240VAC 50hz
1/10 hp 1.2 amp
Shipping Weight:
11 lbs (5 kg)
Machine Size:
16"W x 5"D x 5"H
(41W x 13D x 13H cm)
Bench Size:
20"W x 6"D
(51W x 15D cm)

KEY MACHINES

Tubular Duplicat™

Long-Lasting Motor

High-Quality Carbide Cutter

Duplicates 7-Pin Standard Sized Tubular Keys

Duplicates keys with any space and depth configurations.

#1

Tubular Duplicat™
No. 747E
No. 747E240V (240 volt)

Able to Duplicate from an HPC Tubular Pick

This machine can duplicate 7-pin Standard Tubular Keys.

The **HPC/Scotsman Tubular Duplicat™** is a standard tubular key duplicator. **It duplicates 7-pin standard sized tubular keys** with spaces in any position and cuts of any depth. The machine is equipped with a carbide cutter for smooth cutting and a plexiglas shield for added safety. It also can duplicate a key from an HPC Tubular Pick. The Tubular Duplicat™ provides an **economical key cutting solution** for standard sized tubular keys.

Tubular Duplicat™ No. 747E

115VAC 60hz, 1/15 hp 1.5 amps
Shipping Weight:
11 lbs (5 kg)
Machine Size:
16"W x 5"D x 5"H
(41W x 13D x 13H cm)
Bench Size:
20"W x 6"D
(51W x 15D cm)

No. 747E240V

240VAC 50hz, 1/10 hp 1.2 amp
Shipping Weight:
11 lbs (5 kg)
Machine Size:
16"W x 5"D x 5"H
(41W x 13D x 13H cm)
Bench Size:
20"W x 6"D
(51W x 15D cm)

KEY MACHINES

Pocket Cut-Up™



SPACE SAVER



Pocket Cut-Up™ No. TKM-90

Shipping Weight: 0.8 lbs / 0.4 kg
Machine Size:
2" dia. x 4" long
5 dia. x 10 long cm

The **Pocket Cut-Up™** is a compact, portable tubular key machine. It is factory preset to cut **7-pin standard, center sequence tubular keys by code**. Offset left and offset right sequence (including dead pin cuts) can be cut with one simple adjustment. **It also cuts Greenwald style tubular keys**. The tubular key blank is held firmly in place by the swing-away key holding fixture, that locks the depth adjustment knob at pre-selected depths. By turning the knob, the carbide cutter cuts brass and steel key blanks with ease. The Pocket Cut-Up™ is so **incredibly lightweight and compact** that it can be carried in your pocket!

Tubular Key Blanks



No. 137 (Steel)
50 per box
All Steel Construction with Nickel Plating (standard size)
.375"/9.53mm OD
.312"/7.92mm ID



No. 137B (Brass)
50 per box
Unplated Brass Body with Nickel Plated Steel Head (standard size)
.375"/9.53mm OD
.312"/7.92mm ID



No. 137SB (Brass)
50 per box
Unplated Brass Body with Nickel Plated Steel Head (small bore)
.365"/9.27mm OD
.300"/7.62mm ID



Code Cards for Blitz™ & Switch Blitz™

No. DECK-150

Included with 1200CMB, 1200CMBX and 1233CMSB Series Machines.

KEY MACHINE ACCESSORIES

Description	Card No.	Cutter	Description	Card No.	Cutter
American Motors (D, E, K, L)	C1	CW-1011	BMW/Mercedes 75+ (11-Wafer)	CF34	CW-1011
Arrow, Large Pin	C2	CW-14MC	Porsche (911-912)	CF36	CW-1011
Arrow (A2)/Best/Falcon/Eagle	C3	CW-90MC*	Datsun/Mazda/Triumph/Jaguar	CF40	CW-1011
Briggs & Stratton Disc (Gas Cap)	C4	CW-1011	British Autos & Cycles	CF43	CW-1011
Chicago/Fort Single-Sided Disc	C5	CW-1011	Ford Cargo Truck 86+ Sterling	CF48	CW-1011
Chicago Pin	C6	CW-1011	Jaguar XJ6 88+ (10-Disc)	CF49	CW-1011
Chrysler Pin 69+	C10	CW-1011	Volvo/ MG Primary & Secondary	CF51	CW-1011
Corbin Disc	C11	CW-1011	Volvo 240, 740, 760	CF52	CW-1011
Corbin Small Pin	C12	CW-1011	Saab 74+	CF56	CW-1011
Dexter Large Pin 69+	C16	CW-14MC	Datsun/Subaru/Nissan (F,M,N,W)	CF60	CW-1011
Eagle Small Pin Long Space	C20	CW-20FM*	Ford/Mazda Truck	CF63	CW-1011
Eagle Large Pin	C21	CW-14MC	Mazda70-80	CF64	CW-1011
Ford 5-Pin Double-Sided 65+	C24	CW-14MC	Ford/Mercury/Mazda	CF65	CW-1011
General Motors Wafer 36+	C25	CW-1011	Datsun/Subaru/GMC/Nissan (8-Disc)	CF67	CW-1011
Hudson Small Pin	C26	CW-1011	Ford/Mazda MPV Minivan 10-Cut	CF68	CW-1011
Ilco Small Pin	C27	CW-1011	Honda Ignition thru '76 2001-4949	CF70	CW-1011
Ilco & Lockwood Large Pin	C28	CW-14MC	Honda Door/Trunk thru '76		
Illinois/Timberline Single-Sided Disc	C29	CW-1011	Series 111111-444444	CF71	CW-1011
American Small Pin	C30	CW-1011	Acura (1986+)/Honda 82+	CF73	CW-1011
Kwikset Large Pin	C31	CW-14MC	Acura (1990+)/Honda 88+	CF74	CW-47MC**
Kwikset Titan	C31X	CW-1011	Hyundai/Toyota/Isuzu/Mitsubishi	CF80	CW-1011
Master Small Pin (7K)	C34	CW-1011	Chevy Luv (B)/Toyota 69+	CF81	CW-1011
Master Standard Large Pin (1K)	C35	CW-1011	Toyota (unlettered) 69+	CF82	CW-1011
Medeco Standard (.030 inc.)	C36	CW-1012*	GM-Chevy/Isuzu/Mitsubishi	CF85	CW-1011
National Cabinet Single-Sided Disc	C37	CW-1011	GM-Chevy Nova (R,S)	CF86	CW-1011
National Cabinet Small Pin Standard	C39	CW-1011	Toyota 8-Disc	CF87	CW-1011
National Large Pin	C40	CW-14MC	Toyota/Geo/Isuzu/Suzuki	CF88	CW-47MC**
Ruswin Large Pin (non system 70)	C41	CW-90MC*	Geo Tracker/Suzuki Sidekick/Isuzu	CF89	CW-1011
Ruswin D&H Pre-System 70	C42	CW-90MC*	Fiat Ignition 1967+	CF90	CW-1011
Sargent Large Pin	C44	CW-20FM*	Fiat Secondary	CF91	CW-1011
Schlage Large Pin	C45	CW-14MC	Fiat Strada 79-80)	CF94	CW-1011
Segal Large Pin	C46	CW-14MC	Fiat Strada 81+	CF96	CW-1011
Taylor Small Pin	C48	CW-1011	Iveco Truck (P, Z)	CF99	CW-1011
Taylor Large Pin	C49	CW-14MC	Chrysler/Renault/Peugeot (Primary)	CF100	CW-1011
Falcon/Weiser Large Pin	C50	CW-14MC	Chrysler/Renault (Secondary)	CF101	CW-1011
Welch Large Pin	C51	CW-20FM*	Chrysler/Renault (Secondary)	CF102	CW-14MC
Weslock Large Pin/Vanguard	C52	CW-14MC	Chrysler/Renault/Peugeot	CF114	CW-1011
XL Lock Letterbox (X, K Series)	C53	CW-1011	Chrysler/Renault/Peugeot/Eagle	CF118	CW-1011
Yale Disc	C55	CW-1011	Eagle Premier Ignition 88+	CF119	CW-47MC**
Yale Small Pin	C56	CW-1011	Hyundai-U.S. (X-Series) 86+	CF201	CW-1011
Yale Large Pin	C57	CW-14MC	Yugo Secondary (Z)	CF202	CW-1011
Master Pro Series 2001+	C103A	CW-1011	Yugo Secondary (G)	CF203	CW-1011
Dom 2H (44) Double-Sided	C104	CW-1011	GM-Allante 87+	CF204	CW-1011
Dom 2C (17) Single-Sided	C105	CW-1011	GM-Pontiac LeMans (S) 88+	CF205	CW-1011
National Cabinet Lock Letterbox	C107	CW-1011	GM-Cavalier 91+ "N" Body 92+	CF206	CW-1011
Abus Diskus Rekeyable	C112	CW-1011	GM-Saturn	CF207	CW-1011
Lori L10 IC	C115	CW-90MC*	Geo Prizm/Toyota Camry/Corolla	CF208	CW-1011
Schlage Everest IC	C116	CW-90MC*	Toyota Corolla Wagon 93+	CF209	CW-1011
Alfa Flexcore	C345	CW-90MC*	Hyundai Sonata	CF211	CW-1011
ASSA Twin 6000	CEX1	CW-32MC*	GM 94+ Modular Ignition Program	CF215	CW-1011
VW (plain/shoulder side)	CF3	CW-1011	Kia 03	CF236	CW-47MC**
Audi/Porsche/VW	CF4	CW-1011	Kia/Hyundai 7-Cut (X,Y Series)	CF301	CW-1011
Volvo/VW (Gas Cap)	CF8	CW-1011	Hyundai 8-Cut (S,T Series)	CF302	CW-47MC**
Ford Capri/Fiesta/Jaguar	CF11	CW-1011	Ford Aspire (Kia) 10-Cut (B Series)	CF303	CW-1011
Merkur (German Ford) 85-89	CF13	CW-1011	Nissan Pathfinder 96+	CF304	CW-1011

Note: All code cards are also available separately.
 Check www.hpcworld.com for a comprehensive code card cross-reference.
 * These cutters are not supplied with the Blitz™ or Switch Blitz™ Machines
 ** CW-47MC is supplied with the Extreme Blitz™ Machine

continued:



No. DECK-25

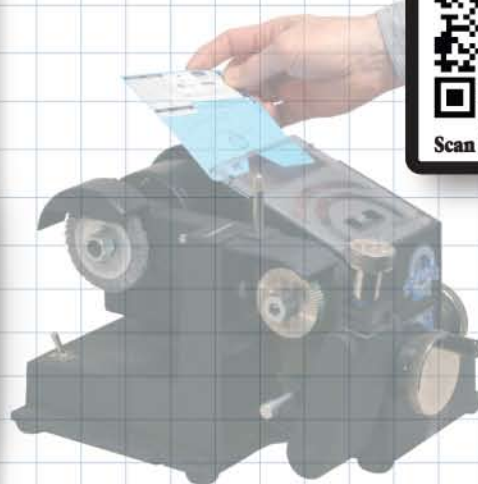
Additional cards included with 1200CMBX Series

Description.....	Card No. ...	Cutter
Kia Sephia 98+	CF305	CW-1011
Mitsubishi Galant 8-Cut 99+	CF306	CW-1011
Toyota 01	CF307	CW-47MC**
Honda Motorcycle '76-'82	CMC30	CW-1011
Honda Cycles 83+	CMC37	CW-1011
Kawasaki Cycles 79+	CMC50	CW-1011
Kawasaki 7-Cut (A,B Series)	CMC51A	CW-1011
Kawasaki Cycles 93+	CMC51B	CW-1011
Suzuki Cycle 101-499 Series	CMC70	CW-1011
Suzuki Cycles 88+	CMC71	CW-1011
Yamaha Cycles 81+	CMC80	CW-1011
Yamaha Cycle 77-86	CMC81	CW-1011
Kaba Peaks (140) (6-Pin) (A2)	CPKS1	CW-90MC*
Kaba Peaks (150) (6- & 7-Pin) (A2)	CPKS2	CW-90MC*
Medeco® Biaxial	CSP3	CW-1012*
Medeco® Biaxial 60-Series	CSP4	CW-1012*
Corbin/Russwin/Emhart (system 70)	CX1	CW-1013*
Master Super Large	CX2	CW-90MC*
Medeco Small Pin (thin head)	CX3	CW-1012*
Corbin (system 70) (X-class/27-99)	CX5	CW-90MC*
Corbin/Russwin/Emhart (system 70)	CX6A	CW-90MC*
Russwin (system 70) (K,N) 77+	CX7	CW-90MC*
Best Falcon Eagle Arrow IC A3 .018 inc.	CX10	CW-90MC*
Best Falcon Eagle Arrow IC A4 .021 inc.	CX11	CW-90MC*
Chicago/Steelcase Small Pin	CX14	CW-1011
Hudson Disc	CX32	CW-1011
Ford 10-Cut	CX56	CW-1011
LSDA (Taiwan) Large Pin	CX58	CW-14MC
Chrysler Double-Sided 89-92	CX59	CW-1011
Chrysler Double-Sided 93+	CX60	CW-1011
Ford Eight Cut 96+	CX101	CW-1011
Chrysler 98 8-Cut	CX102	CW-1011
Saturn 03+	CX263	CW-1011
Honda Door/Trunk thru 76		
Hyundai F001-2500 and M1-2500	CF235	CW-1011
Micrometer Card "B" Jaw (inch)	CMBI	
Micrometer Card "B" Jaw (metric)	CMBM	
Micrometer "A" Jaw (black tip-metric)	CMHM	
Micrometer "A" Jaw (black tip-inch)	CMHT	
Micrometer Card "A" Jaw (inch)	CMMI	
Micrometer Card "A" Jaw (metric)	CMMM	
Micrometer "A" Jaw (red tip-metric)	CMRM	
Micrometer "A" Jaw (red tip-inch)	CMRT	

Description	Card No.	Cutter
Corbin Pre-Sys 70 X-Class 27/57/67/77 (Series + 97, 99, AR, BL, BR)	C13	CW-90MC*
Corbin Pre-System 70 Z-Class (59 Series 60/70 & L Series)	C14	CW-90MC*
Winkhaus 7H High Security	C106	CW-1011
Strattec Tool Box, Office Furniture	C385	CW-1011
TrioVing	C419	CW-14MC
Russwin 852 Class	C852	CW-90MC*
Russwin 981 Class	C981	CW-90MC*
Yale Large Pin	CX9	CW-14MC
Russwin A Class	CX12	CW-90MC*
Russwin 752	CX13	CW-90MC*
Arco Rifkin Bank Bags	CX18	CW-1011
Lori 80	CX27	CW-90MC*
Corbin Wide Key	CX49	CW-14MC
Lockwood	CX57	CW-14MC

The following cards allow you to use standard pin kits to master key these manufacturers in .015" increments.

Arrow New Large Pin	CMK2	CW-14MC
Corbin X Class	CMK13	CW-14MC
Corbin Z Class Pre-System 70	CMK14	CW-14MC
Kwikset	CMK31	CW-14MC
Lockwood	CMK33	CW-14MC
Russwin K&N	CMK41	CW-14MC
Sargent Sectional	CMK44	CW-14MC
Weiser/Falcon	CMK50	CW-14MC
Weslock	CMK52	CW-14MC
Yale Large Pin	CMK57	CW-14MC
General Large Pin	CMKX8	CW-14MC



Print Code Cards from CodeSource® and CardWare™. See the Software Section for additional information.



Code Cards for The Punch Machine™



No. PDECK-104

Included with 1200PCH Punch Machine™

Description	Card No.	Punch	Description	Card No.	Punch
American Motors (D, E, K, L)	P1	PCH-1011	Geo Tracker/Suzuki Sidekick/Isuzu	PF89	PCH-1011
Arrow (A2)/Best/Falcon/Eagle	P3	PCH-14	Chrysler/Renault/Peugeot (Primary)		
Briggs & Stratton Disc (Gas Cap)	P4	PCH-1011	(B, E, G, H, J) 83-85	PF100	PCH-1011
Chicago/Fort Single Sided-Disc	P5L	PCH-1011	Renault (2nd) (B, C, D, E, G, T, V)	PF101	PCH-1011
Chicago/Fort Single Sided-Disc	P5R	PCH-1011	Chrysler/Renault (2nd) non-letter 81+	PF102	PCH-14
Chicago Pin	P6L	PCH-1011	Chrysler/Renault Alliance, Peugeot		
Chicago Pin	P6R	PCH-1011	(Primary) 86-88 (M, N, P, R, S)	PF114	PCH-1011
Chrysler Pin 69+	P10	PCH-1011	Chrysler/Renault Peugeot/Eagle		
Dexter Large Pin 69+	P16	PCH-14	Medallion (Secondary) (M, N, P, R, S)	PF118	PCH-1011
Ford 5-Pin Double-Sided 65+ 2nd	P24L	PCH-14	Eagle Premier Ignition 88+	PF119	PCH-47
Ford 5-Pin Double-Sided 65+ Primary	P24R	PCH-14	Hyundai-U.S. (X-Series) 86+	PF201	PCH-1011
General Motors Wafer 36+	P25	PCH-1011	GM-Allante 87+	PF204	PCH-1011
Illinois Single-Sided Disc	P29L	PCH-1011	GM-Pontiac LeMans (S) 88+	PF205	PCH-1011
Illinois/Timberline Single-Sided Disc	P29R	PCH-1011	GM-Cavalier 91+ / "N" Body 92+	PF206	PCH-1011
American Small Pin	P30	PCH-1011	GM-Saturn	PF207	PCH-1011
Kwikset Large Pin Standard	P31	PCH-14	Geo Prizm/Toyota Camry/		
Kwikset Titan	P31X	PCH-1011	Corolla Sedan (10001-15000)	PF208	PCH-1011
Master Small Pin (7K)	P34	PCH-1011	Toyota Corolla Wagon 93+	PF209	PCH-1011
Master Standard Large Pin (1K)	P35	PCH-1011	Hyundai Sonata (Y1001-2000)	PF211	PCH-1011
National Cabinet Single-Sided Disc	P37	PCH-1011	GM (1994+) Modular Ignition Prog	PF215	PCH-1011
National Cabinet Small Pin Standard	P39	PCH-1011	Kia 2003	PF236	PCH-47
Schlage Large Pin	P45	PCH-14	Hyundai/Kia 7-Cut (Y1-2000)	PF301L	PCH-1011
Weslock Large Pin	P52	PCH-1011	Hyundai/Kia 7-Cut		
XL Lock Letterbox (X, K Series)	P53	PCH-1011	(X1-2000, Y7001-8200)	PF301R	PCH-1011
Audi/Porsche/VW	PF4	PCH-1011	Hyundai 8-Cut (T)	PF302L	PCH-47
Volvo/VW (Gas Cap)	PF8	PCH-1011	Hyundai 8-Cut (S)	PF302R	PCH-47
Ford Capri/Fiesta/Jaguar	PF11	PCH-1011	Ford Aspire/Kia 10-Cut (B)	PF303	PCH-1011
Merkur (German Ford) 85-89	PF13	PCH-1011	Nissan Pathfinder 96+	PF304	PCH-1011
BMW 75+ Mercedes-Benz 77+	PF33	PCH-1011	Kia Sephia 98+(8-cut)	PF305	PCH-1011
BMW (11-Wafer) 84+	PF34	PCH-1011	Mitsubishi Galant 99+(8-cut)	PF306	PCH-1011
British Autos	PF43L	PCH-1011	Honda Cycles 83+ (A, B)	PMC37L	PCH-1011
British Autos & Cycles	PF43R	PCH-1011	Honda Cycles 83+ (C, D)	PMC37R	PCH-1011
Ford Cargo Truck 86+ /Sterling	PF48	PCH-1011	Kawasaki Cycles 79+	PMC50	PCH-1011
MG/Volvo Primary	PF51L	PCH-1011	Kawasaki 6- & 7-Cut (B)	PMC51AL	PCH-1011
MG/Volvo Secondary	PF51R	PCH-1011	Kawasaki 7-Cut (A)	PMC51AR	PCH-1011
Volvo 240, 740, 760	PF52	PCH-1011	Suzuki Cycles 88+	PMC71	PCH-1011
Datsun/Subaru/Nissan (F, M, W)	PF60L	PCH-1011	Chicago Small Pin/Steelcase	PX14	PCH-1011
Datsun/Nissan (M, N)	PF60R	PCH-1011	Hudson Disc	PX32	PCH-1011
Ford/Mazda Truck 2000-2499/3500-4600	PF63L	PCH-1011	Ford 10-Cut 84 1/2+	PX56	PCH-1011
Ford/Mazda Truck 1500-1999/5000-6100	PF63R	PCH-1011	Lockwood (Aust) LW4, LW5	PX57L	PCH-14
Ford/Mercury/Mazda (6500-7733)	PF65	PCH-1011	Lockwood (Aust) LW4R, LW5R	PX57R	PCH-14
Datsun/Subaru/Nissan (8-Disc) 82+	PF67L	PCH-1011	Chrysler Double-Sided 89-92	PX59	PCH-1011
GMC Tiltmaster (8-Disc) 85+	PF67R	PCH-1011	Chrysler Double-Sided 93+	PX60	PCH-1011
Ford/Mazda MPV Minivan 10-Cut	PF68	PCH-1011	Ford 8-Cut 96+	PX101	PCH-1011
Honda Ignition (thru 76) 2001-4949	PF70	PCH-1011	Chrysler 8-Cut 98+	PX102	PCH-1011
Honda Dr/Trnk (thru 76) 111111-444444	PF71	PCH-1011	Saturn 03+	PX263	PCH-1011
Honda 82+ X71, X130	PF73L	PCH-1011			
Acura 86+ / Honda 82+			Micrometer Card Left Hand (in)	MIAL	
X129, X181, X183, X208	PF73R	PCH-1011	Micrometer Card Right Hand (in)	MIAR	
Acura 90+ / Honda Auto 86+ 5001-8442	PF74	PCH-47	Micrometer Card Left Hand (mm)	MMAL	
Chevy/Hyundai/Isuzu (C, H, U, Z)	PF80L	PCH-1011	Micrometer Card Right Hand (mm)	MMAR	
Mitsubishi/Toyota (D, K, R, S)	PF80R	PCH-1011			
Toyota (F, P)	PF80RR	PCH-1011			
GM-Chevy Spectrum/Isuzu/Mitsu (A, H)	PF85L	PCH-1011			
Daihatsu/Toyota 84+ (K)	PF85R	PCH-1011			
GM Chevy Nova/Toyota Ignition (R)	PF86R	PCH-1011			
GM Chevy Nova/Toyota 2nd (S)	PF86RR	PCH-1011			
Toyota 8-Disc	PF87	PCH-1011			
Geo Metro/Storm/Isuzu/					
Mitsubishi/Suzuki (E, N, U)	PF88L	PCH-47			
Daihatsu/Toyota/Prism (D, G, W, X)	PF88R	PCH-47			



Scan for more info!

Specialty Code Cards for Blitz™ & Switch Blitz™



No. DECK-SD12 Safe Deposit Deck

Description	Card No.	Cutter
Diebold 175-05 Renters	CSD1	CW-EC*
<i>In addition to the cutter specified, the following manufacturers require the CW-45SMS cutter.</i>		
LeFebure 7300, 7700 Renters	CSD20	CW-FC*
Mosler M5700, M3175 Flat Renters	CSD30	CW-FC*
Mosler M5700 Corrugated Renters	CSD31	CW-FC*
Mosler M5700, M3175 Flat/ Corrugated Guard	CSD36	CW-FC*
S&G 4400, 4231 Renters	CSD40	CW-CC*
S&G 4400 Guard	CSD41	CW-CC*
S&G 158/159 Renters	CSD47	CW-DC*
Yale B Series Renters	CSD50	CW-CC*
Yale 3300 Renters	CSD51	CW-CC*
Lloyd Matheson Renters (Ilco/Precision P40)	CSD80	CW-CC*
Lloyd Matheson Guard (Ilco/Precision P40)	CSD81	CW-CC*

Safe Deposit Deck includes RT-SD & HT-SD Tip Gauges and SPR-5 Spacer.

Additional Cards

Description	Card No.	Cutter
Assa 500 A	C346	CW-105*
Assa 500 A Masterkeyed	C347	CW-105*
Assa 500 B Masterkeyed	C348	CW-105*
Assa 500 C Masterkeyed	C349	CW-105*
Assa 700 A Masterkeyed	C350	CW-105*
Assa 700 B Masterkeyed	C351	CW-105*
Assa 700 C Masterkeyed	C352	CW-105*
Assa 500 B	C353	CW-105*
Assa 700 A	C356	CW-105*
Assa 700 B	C357	CW-105*
Corbin-Russwin-Pyramid	CHS1	CW-90MC*
CX-5 Scorpion	C1176	CW-90MC*
Marks High-Security	C387	CW-14MC
Master Pro Series (6000K/7000K)	C103	CW-1011
Medeco® 3 Bi Level	C398	CW-1012*
Medeco® Half Step	CX4	CW-1012*
Medeco® KeyMark	CKYM1	CW-90MC*

Replacement Cards



for HPC Adapters

Description	Card No.	Cutter
Tibbe	C2093	CW-95*
Tubular	CTK1	CW-128C*

Private Label Cards

Description	Card No.	Cutter
LSDA "LSA" Keyway	C101	CW-90MC*
Clark Platinum Keyway	C102C	CW-14MC
USCAN "Locksmith" Keyway	C108H	CW-14MC
U.S. Lock RX Keyway	C109	CW-14MC

Automotive Super Jaw Kit



Automotive Super Jaw Kit No. ASJ-1200

The car manufacturers make their keys double-sided for the convenience of their customers. HPC made the **Automotive Super Jaw** for the convenience of our customers. It allows you to **accurately cut double-sided automotive keys on your Blitz™ and Switch Blitz™ Machines** (without the time-consuming use of shims or wires that can be easily lost or misplaced). The kit **includes 20 code cards covering the most recent vehicles** and designed exclusively for use with the Automotive Super Jaw.

Description	Card No.	Cutter No.
Hyundai V1-1200 Series	ASC34	CW-1011
Nissan, Subaru 8 Cut '82+ & GM Cargo Trucks '85+	ASC67	CW-1011
Mazda/Ford 10 Cut	ASC68	CW-1011
Honda '88+ & Acura '90+	ASC74	CW-47MC
Geo Metro, Prism & Storm, Daihatsu, Isuzu, Mitsubishi, Suzuki, Toyota	ASC88	CW-47MC
Chevy (Geo) Tracker, Isuzu, Suzuki, Chrysler, Mitsubishi	ASC89	CW-1011
Ford 8 Cut '96+	ASC101	CW-1011
Chrysler 8 Cut '96+	ASC102	CW-1011
Toyota 25001-26200 '92+, Geo Prizm '93+, Suzuki Aerio 2003	ASC208	CW-1011
GM 10 Cut '94	ASC215	CW-1011
Hyundai 10 Cut 2007	ASC235	CW-1011
Saturn 2003+, Circle Plus Keys	ASC263	CW-1011
Kia & Hyundai 7 Cut- X,Y Series	ASC301	CW-1011
Hino Truck 73000-73999	ASC267	CW1011
Hyundai, Kia & Suzuki - R, S, T & V Series	ASC302	CW-47MC
Nissan 10 Cut '96+	ASC304	CW-1011
Kia 8 Cut '98+	ASC305	CW-1011
Mitsubishi Galant '99+, 8 Cut	ASC306	CW-1011
Toyota 2001, Chevy Colorado, & GMC Canyon	ASC307	CW-47MC
Iveco	ASC789	CW-1011

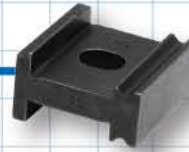
Note: All code cards are also available separately.
Check www.hpcworld.com for a comprehensive cross-reference on code cards.
* These cutters are not supplied with the Blitz™ or Switch Blitz™ Machines



Specialty Jaws and Adapter Kits

Kaba Peaks Jaw

With this Jaw you are able to cut Kaba Peaks keys on Blitz™, Switch Blitz™ and CodeMax® Series Key Machines.



No. KPJ-1

For Blitz™, Switch Blitz™ and CodeMax®



Medeco® Jaw

With this Jaw you are able to cut Medeco® Level 1 Commercial keys. This jaw is for use on Blitz™, Switch Blitz™ and CodeMax® Series Key Machines.



No. MJ-1

For Blitz™, Switch Blitz™ and CodeMax®



Medeco® KeyMark® Jaws and Kit

With these different Jaws you are able to cut Medeco® KeyMark® keys on your Blitz™, Switch Blitz™, CodeMax® and Tiger SHARK™ Machines.

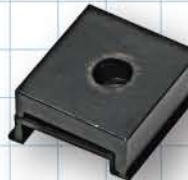


No. MJ-2S

For Tiger SHARK™ (top and bottom jaw)

No. MKYM-KIT

For Blitz™ and Switch Blitz™ (jaw, insert, card, and tip stop)



No. MJ-2

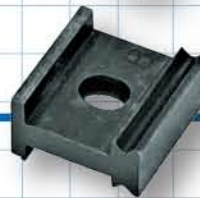
For Blitz™ and Switch Blitz™ (jaw and insert only)

No. MJ-2MAX

For CodeMax® (jaw, insert, and tip stop)

Medeco® 3 Freedom Jaws

With the **No. MJ-3** Jaw you are able to cut Medeco® 3 Freedom keys on Blitz™, Switch Blitz™ and CodeMax® Series Key Machines.



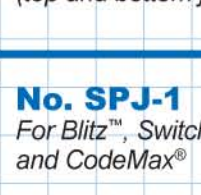
No. MJ-3

For Blitz™, Switch Blitz™ and CodeMax®

No. MJ-3S

For Tiger SHARK™ (top and bottom jaw)

With the **No. MJ-3S** Jaws you are able to cut Medeco® 3 Freedom keys on Tiger SHARK™ Key Machines.



Schlage Primus®/Quad Jaw

With this Jaw you are able to cut Schlage® high security Primus® keys and Quad Series, as well as Schlage® standard keys. This jaw is for use on Blitz™, Switch Blitz™ and CodeMax® Series Key Machines.



No. SPJ-1

For Blitz™, Switch Blitz™ and CodeMax®



Best Jaw

With these Jaws you are able to cut Best keys on Tiger SHARK™ Key Machines.



No. BEST-1S

For Tiger SHARK™ (top and bottom jaw)



GM 10-Cut/Ford 8-Cut Jaw

This Jaw will allow you to cut GM 10-Cut and Ford 8-Cut keys on Blitz™, Switch Blitz™ and CodeMax® Series Key Machines.



No. GMFJ-1

For Blitz™, Switch Blitz™ and CodeMax®



Speedex® Code Adapter Kit

No. SCA-9100
For Mini Speedex®
and Premier Speedex®



HPC's Speedex® Code Adapter Kit turns your duplicator into a code cutting machine! It works on all Mini Speedex® and Premier Speedex® Machines. It's faster to cut a key to a cylinder than to pin a cylinder to a key! Perform an easy one-time installation and have two machines in the same space as one. The adapter locks out of the way when duplicating and holds .500" size plugs. **HPC's Speedex® Code Adapter Kit is the least expensive way for you to start code cutting!**



No. CW-24MC
Cutter for Speedex® Code Adapter Kit

Tibbe Key Adapter Kit

No. TIBBE-CMB
For Blitz™ (pictured)

No. TIBBE-SWITCH
For Switch Blitz™

No. TIBBE-SHARK
For Tiger SHARK™



With the Tibbe Key Adapter Kit you can cut both 6-space and 8-space Tibbe keys on your Blitz™, Switch Blitz™ or Tiger SHARK™ machine. These specialty keys are used on some Ford and Jaguar cars. Fast, easy, accurate and economical, this adapter will be a valuable addition to your cutting equipment. The Tibbe Key Adapter Kit comes with everything you need to cut these high-profit keys, including the adapter, slotter cutter, 2 Allen wrenches and a code card (for all Blitz™ and Switch Blitz™ Series Key Machines).



No. CW-95
Cutter for Tibbe Adapter Kits

Tubular Key Adapter Kit

No. TKA-CMB
For Blitz™ (pictured)

No. TKA-SWITCH
For Switch Blitz™

No. TKA-SHARK
For Tiger SHARK™



With the Tubular Key Adapter Kit you can convert your Blitz™, Switch Blitz™ or Tiger SHARK™ into a tubular key code machine. It is factory preset to cut standard 7-pin tubular keys (.375 O.D.) by code. The Tubular Key Adapter fits in the standard jaw making conversion quick and easy. The kit comes with an adapter, carbide slotter cutter, a code card (with the Blitz™ and Switch Blitz™ models) and an Allen wrench. Plus, with the included Tubular Key Decoder, you can quickly decode existing tubular keys and make new factory originals by code. Fast, easy, accurate and economical, the Tubular Key Adapter Kit is a valuable addition to your cutting equipment.



No. CW-128C
Cutter for Tubular Adapter Kits



Gauges & Accessories

Tip Stops



No. CM-1054MA

Standard replacement tip stop for Blitz™, Switch Blitz™, CodeMax® and Trace-A-Key® Series Key Machines



No. RT-SD

For use with safe deposit keys on Blitz™, Switch Blitz™ and CodeMax® Series Key Machines



No. CM-1054R

For use with 7-pin Best and 10-cut Ford on Blitz™, Switch Blitz™, CodeMax® and Trace-A-Key® Series Key Machines



No. HT-SD

For use with safe deposit keys on Blitz™, Switch Blitz™, and CodeMax® Series Key Machines



No. HT-625

For use with L&F safe deposit box keys on Blitz™, Switch Blitz™ and CodeMax® Series Key Machines



No. HT-125

For use with L&F safe deposit box keys on Blitz™, Switch Blitz™ and CodeMax® Series Key Machines

Gauges for 4-Way Jaws



**Standard
Tip Gauge
No. ST-4**

The **Standard Tip Gauge** allows you to tip gauge keys from any side of HPC's 4-way jaws. For use on Speedex®, Trace-A-Key® and Automate™ Series Key Machines (with 4-way jaws). Set of 2.



**Best/Short
Tip Gauge
No. BT-4**

The **Best/Short Tip Gauge** allows you to tip gauge Best/Short keys from any side of HPC's 4-way jaws. For use on Speedex®, Trace-A-Key® and Automate™ Series Key Machines (with 4-way jaws). Set of 2.

Key Shims



**Brass Plated
Key Shim
No. KBPS-1**

This **Brass Plated Key Shim** (on chain) helps prevent hard to hold keys from tilting. For use with Blitz™, Switch Blitz™ and CodeMax® Series Key Machines.



**Ford Double
Sided Block
No. FB-1**

Ford Double-Sided Block set consists of 2 blocks for holding Ford double-sided keys when duplicating.

Calibration

The **Blitz™ Calibration Kit** is an easy to use tool kit for use with Blitz™ and Switch Blitz™ Series Key Machines. It is designed to quickly and accurately diagnose whether your machine is out of calibration. If it is out of calibration, the kit can then be used to calibrate your machine with just a few simple steps, or determine whether factory service is needed. This kit makes it easy to calibrate your machine and helps to eliminate unnecessary downtime.



**Blitz™
Calibration Kit**
No. CMB-CK



Connections

The **Software Cable** is a 25-foot (7.5m) long 9-pin serial cable that connects your CodeMax® or Tiger SHARK™ to your PC. It allows for downloading bittings from HPC software, including CodeSource®, MasterKing® and KeyTrail®.

Software Cable
No. CABLE-25S



Time Savers

The **Quick Nut** twists on and off by hand so that there is no need for any tools when changing cutters. The Quick Nut is designed for use with Blitz™, Switch Blitz™, CodeMax® and Tiger SHARK™ Series Key Machines.



Quick Nut
No. QN-100B



You raise and lower the shoulder gauge on your machine many times each day. The **Easy Flip** Handle attaches to the shoulder gauge on all Blitz™, Switch Blitz™, and CodeMax® machines providing a sturdy handle to manipulate the shoulder gauge. It comes complete with 2 sets screws and an Allen wrench for easy installation.



Easy Flip
No. EFLIP-1200



Wing Nuts & Washers

The **Standard Wing Nut** is made of virtually indestructible plastic. It is included on the Speedex® duplicators and also fits all other HPC Key Machines.

**Standard
Wing Nut**
No. SNK-3



The **Easy Grip Wing Nut** is made of polished steel for a great look and is ergonomically designed to make loading keys easier. It is included on the Tiger SHARK™, CodeMax®, Blitz™, Switch Blitz™, The Punch Machine™, Trace-A-Key® and Automate™. It also fits all Speedex® machines.

**Easy Grip
Wing Nut**
No. EGN-1



The **Thrust Bearing Washers** help prevent over tightening of the wing nuts. Sold in sets of 2.



Thrust Bearing Washer Set
No. BBW-2

Transport

This soft-sided, rugged **Carrying Case** has a heavy-duty plywood base. The cushioned handles make it comfortable to carry. It will hold the Blitz™, Switch Blitz™, The Punch Machine™, Trace-A-Key®, Automate™ or Mini Groove™.

Carrying Case
No. 1200 CASE





Gauges & Accessories

Organization



Storage Panel No. CARD-BP

Holds 40 code cards conveniently.
Cards sold separately.



Instruction Manual Set

No. CARD-B
for Blitz™ Series

No. CARD-SB

for Switch Blitz™ Series
Includes Manual, Storage Panels
for 150 cards and binder.

Softie™ Brush



Softie™ Brush and Assembly

No. 12SB
Softie™ Brush
Assembly

No. TYX-3
Softie™ Brush Only

It is important to de-burr newly cut keys to prevent obstructions in the lock. The **Softie™ Brush** is the only key machine brush made of Tylon-X (a unique space-age polymer). The carbide-impregnated material de-burrs faster and smoother, and **lasts 6 times longer than a wire brush**. The Softie™ Brush comes standard on the Tiger SHARK™, Blitz™, Switch Blitz™, Trace-A-Key® and all Speedex® machines. The Softie™ Brush Kit includes the brush, shield, pulley and installation hardware to add the Softie™ brush to standard models of the CodeMax®, 1200CM and older models of the Trace-A-Key® machines.

Blitz™ Shoulder Gauge Safety Switch



Blitz™ Shoulder Gauge Safety Switch No. 1200C-SGS

For 120VAC Machines

No. 1200C-SGS240V

For 240VAC Machines

The **Blitz™ Shoulder Gauge Safety Switch** is designed to protect the shoulder gauge from being accidentally damaged by the cutter. It prevents the cutter from spinning if the shoulder gauge is not positioned all the way down. When the Shoulder Gauge Safety Switch is not in its rest position turning on the machine will result in the safety switch relay disengaging the cutter motor's power. This will also happen if the gauge is moved from its rest position while the cutter motor is already on. This safety switch can easily be added to any 1200CM or Blitz™ machine manufactured from 1980 to 2004 (at which time it became standard equipment).

12-Volt Key Machine Conversion Kit



12-Volt Key Machine Conversion Kit No. DC-12

12-Volt DC Motor Only

(Replacement motor for AC/DC equipped key machines.)

No. DC-MOTOR

The **12-Volt Key Machine Conversion Kit** allows for HPC's 9160MC and 9180MC Speedex® machines to be converted to 12VDC. By using the DC-12 kit you can operate your AC-powered duplicator in your van without the use of expensive inverters. It includes an in-line fuse for protection and a cigarette lighter adapter for plug-in convenience. The kit also includes: motor, frame, pulley, belt, 10 feet (3 meters) of 14-gauge wire, double-pole single-throw toggle switch.

Motor:	12VDC
Power:	40 oz.-inch torque rating, 3000 rpm with load 1/6 hp / 12 amps
Cutter RPM:	1000 rpm (by use of the pulley included)
Shaft:	3/8" (9.5mm) diameter, rotates within ball bearings
Frame:	Standard NEMA 48 configuration
For use with:	9160MC and 9180MC Speedex®

Cutters

Cutter Number	Material	Diameter (A)		Hole Size (B)		Thickness (C)		Flat (D)		Angle (E) degrees
		inches	mm	inches	mm	inches	mm	inches	mm	
Blitz™, Switch Blitz™, CodeMax®, Tiger SHARK™: automotive and small cylinders										
CW-1011	Tool Steel	2.375	60.33	0.375	9.53	0.25	6.35	0.044	1.12	90
CW-1011C	Carbide	2.375	60.33	0.375	9.53	0.25	6.35	0.044	1.12	90
Blitz™, Switch Blitz™, CodeMax®, Tiger SHARK™: standard large pin cylinders										
CW-14MC	Tool Steel	2.375	60.33	0.375	9.53	0.375	9.53	0.046	1.17	100
CW-14MCC	Carbide	2.375	60.33	0.375	9.53	0.375	9.53	0.046	1.17	100
Blitz™, Switch Blitz™, CodeMax®, Tiger SHARK™: Medeco standard, Biaxial, M3 cylinders										
CW-1012	Tool Steel	2.375	60.33	0.375	9.53	0.375	9.53	0.015	0.38	86
Blitz™, Switch Blitz™, CodeMax®, Tiger SHARK™: Emhart High Security cylinders										
CW-1013	Tool Steel	2.375	60.33	0.375	9.53	0.375	9.53	0.010	0.25	100
Blitz™, Switch Blitz™, CodeMax®, Tiger SHARK™: Kwikset, Weiser and Weslock cylinders										
CW-1014	Tool Steel	2.375	60.33	0.375	9.53	0.375	9.53	0.080	2.03	100
Blitz™, Switch Blitz™, CodeMax®, Tiger SHARK™: Assa 400 & 500 Series cylinders										
CW-105	Tool Steel	2.375	60.33	0.375	9.53	0.337	8.56	N/A	N/A	105
Blitz™, Switch Blitz™, CodeMax®, Tiger SHARK™: Sargent and Welch large pin cylinders										
CW-20FM	Tool Steel	2.375	60.33	0.375	9.53	0.375	9.53	0.064	1.61	76
Blitz™, Switch Blitz™, CodeMax®, Tiger SHARK™: Assa Twin cylinders										
CW-32MC	Tool Steel	2.375	60.33	0.375	9.53	0.375	9.53	0.032	0.81	90
Blitz™, Switch Blitz™, CodeMax®, Tiger SHARK™: Japanese and Korean automotive cylinders										
CW-47MC	Tool Steel	2.395	60.83	0.375	9.53	0.250	6.35	0.035	0.89	87
CW-47MCC	Carbide	2.395	60.83	0.375	9.53	0.250	6.35	0.035	0.89	87
Blitz™, Switch Blitz™, CodeMax®, Tiger SHARK™: Best, Falcon, Arrow, Eagle and Kaba IC cylinders										
CW-90MC	Tool Steel	2.375	60.33	0.375	9.53	0.375	9.53	0.046	1.17	90
Blitz™, Switch Blitz™, CodeMax®, Tiger SHARK™: flat steel and safe deposit box locks										
CW-BC	Carbide	2.375	60.33	0.375	9.53	0.054	1.37	N/A	N/A	N/A
CW-CC	Carbide	2.375	60.33	0.375	9.53	0.058	1.47	N/A	N/A	N/A
CW-DC	Carbide	2.375	60.33	0.375	9.53	0.064	1.63	N/A	N/A	N/A
CW-EC	Carbide	2.375	60.33	0.375	9.53	0.069	1.75	N/A	N/A	N/A
CW-FC	Carbide	2.375	60.33	0.375	9.53	0.088	2.24	N/A	N/A	N/A
CW-45SMS	Tool Steel	2.375	60.33	0.500	12.70	0.045	1.14	N/A	N/A	N/A
Switch Blitz™: duplicating										
CW-6010	Tool Steel	2.375	60.33	0.375	9.53	0.281	7.14	0.010	0.25	60
Automate™ & Trace-A-Key® Professional Grade Duplicators										
CW-42HQT	Tool Steel	2.500	63.50	0.375	9.53	0.281	7.14	0.010	0.25	60
CW-41HQC	Carbide	2.500	63.50	0.375	9.53	0.281	7.14	0.010	0.25	60
Premier and Power Speedex® Industrial Grade Duplicators										
CW-23MC	Tool Steel	2.250	57.15	0.500	12.70	0.093	2.36	0.030	0.76	45
CW-34TS	Tool Steel	2.250	57.15	0.500	12.70	0.250	6.35	0.025	0.64	45
Mini Speedex® Industrial Grade Duplicator										
CW-23RM	Tool Steel	2.250	57.15	0.500	12.70	0.250	6.35	N/A	N/A	45
Premier and Power Speedex®: flat steel and safe deposit box locks										
CW-16	Tool Steel	2.250	57.15	0.500	12.70	0.045	1.14	N/A	N/A	N/A
Mini, Premier and Power Speedex®: double angle										
CW-50MC	Tool Steel	2.250	57.15	0.500	12.70	0.281	7.14	0.031	0.79	60
Mini Groove™										
CW-332	Cobalt	.094 _(3/32)	2.50	N/A	N/A	N/A	N/A	N/A	N/A	N/A
Big Groove™										
CW-LPA-2.5	H.S. Steel	.094 _(3/32)	2.50	N/A	N/A	N/A	N/A	N/A	N/A	N/A
Pocket Cut-Up™										
CW-TKM	H.S. Steel	0.187	4.75	N/A	N/A	N/A	N/A	N/A	N/A	N/A
Duplicut™ & Duplicode™										
22-01	Carbide	0.187	4.75	N/A	N/A	N/A	N/A	N/A	N/A	N/A
The Punch Machine™: automotive and small cylinders										
PCH-1011	Tool Steel	N/A	N/A	N/A	N/A	N/A	N/A	0.048	1.22	90
The Punch Machine™: standard large pin cylinders										
PCH-14	Tool Steel	N/A	N/A	N/A	N/A	N/A	N/A	0.048	1.22	100
The Punch Machine™: Japanese and Korean automotive cylinders										
PCH-47	Tool Steel	N/A	N/A	N/A	N/A	N/A	N/A	0.038	0.97	84

